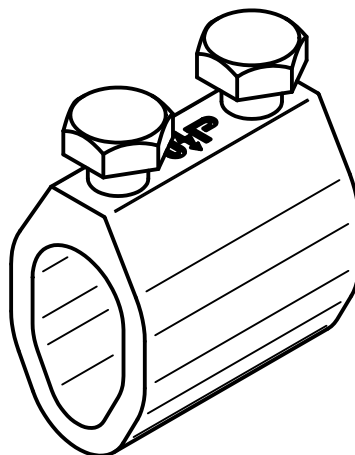
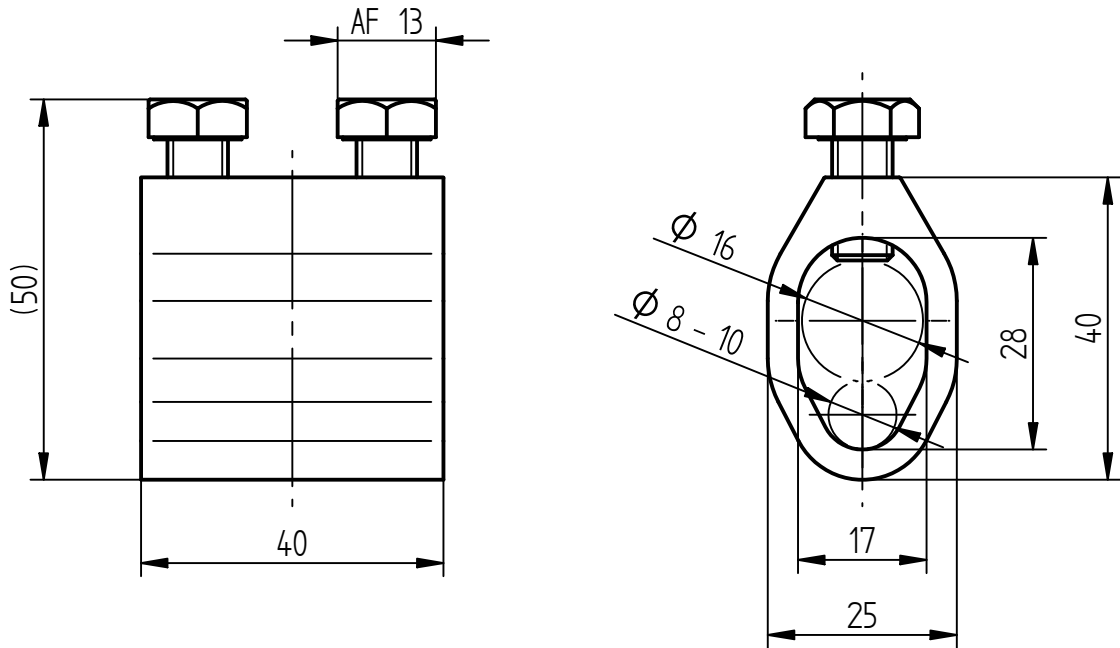


# Product Specification

**Ord.-No.:** **1330**

**Specification:** Disconnecting clamp, Alu  
Ø 8-10 mm / Ø 16 mm

**Performance:** Disconnecting clamp according to DIN EN 62561-1 to be used for connecting the down conductor to the earth entry.



Werkstoff	Aluminium
Passung	Ø 8-10 mm/Ø 16 mm
Screws	[2x] Hexagon bolt M8, stainless steel V2A
Weight	63 g
Standard reference	DIN EN 62561-1
Packing unit	50 units